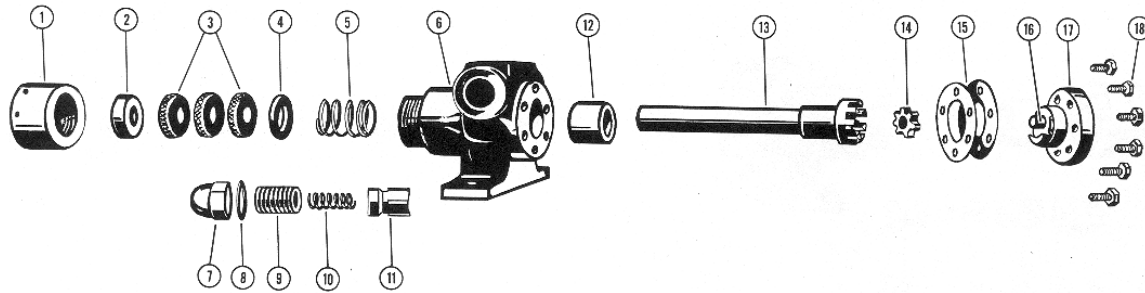


**MODEL FH-32 with Packing**

Subject to change without notice  
 F.O.B. Factory

Supersedes all previous parts lists



ITEM	DESCRIPTION	MATERIAL	PART NUMBER	QTY	PRICE
1	Packing Nut	Plated Steel	2-528-001-241-00	1	
2	Outer Packing Gland	Bearing Bronze	2-522-006-560-00	1	
3	Packing	Standard - Per Ring (NOTE)	2.520-001-830-00	3	
4	Inner Packing Gland	Stainless Steel	2-522-007-610-00	1	
5	Packing Spring	Stainless Steel	2-766-006-610-00	1	
6	Casing and Bushing Assembly	Iron / Carbon - Valve Type - CW Rotation	3-170-808-080-00	1	
		Iron / Carbon - Plain Type - CW Rotation	3-170-810-080-00	1	
7	Relief Valve Cap	Steel	2-798-016-375-00	1	
8	Gasket for Relief Valve Cap	Standard	2-305-032-806-62	1	
9	Relief Valve Adjusting Screw	Steel	2-595-013-375-00	1	
10	Relief Valve Spring	Stainless Steel - 25 to 100 PSI (Code- White)	2-760-017-610-00	1	
		Stainless Steel - 101to 250 PSI (Code-Orange)	2-760-018-610-00	1	
11	Relief Valve Poppet	Steel	2-796-028-375-00	1	
12	Casing Bushing	Carbon Graphite	2-094-008-880-00	1	
13	Rotor and Shaft	Steel	3-563-201-563-00	1	
14	Idler	P.M. Steel	2-416-205-354-32	1	
15	Head Gasket (Set)	Standard	3-310-002-999-00	1	
16	Idler Pin, Plain	Nitralloy	2-430-005-321-00	1	
17	Head (Plain) & Plain Idler Pin Assembly	Iron / Nitralloy	3-360-200-011-00	1	
18	Capscrew 1/4" NF 5/8" Lg. for Head	Steel - Grade 5	2-150-001-255-00	6	

NOTE: Packing must be ordered in multiples of 10 rings