

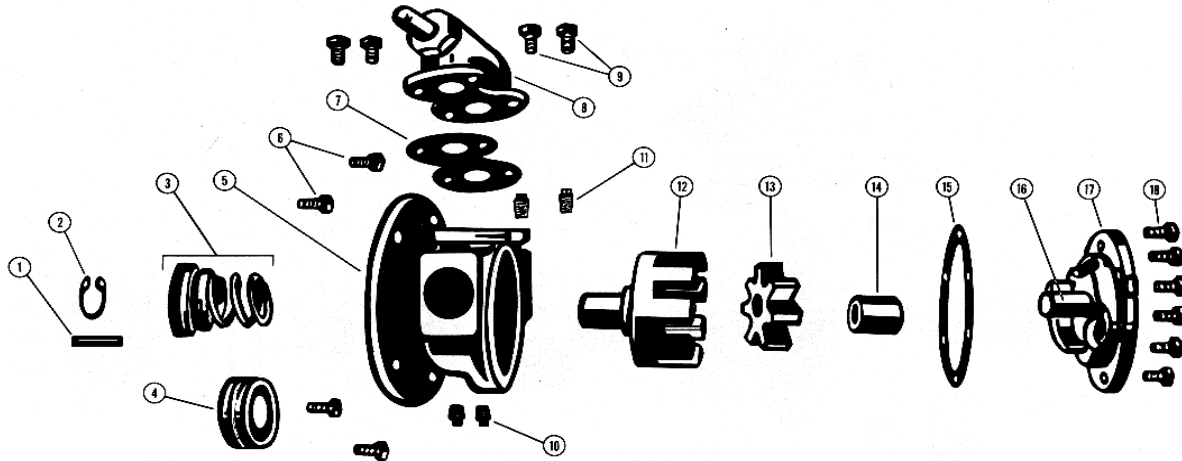
VICAN HEAVY DUTY UNMOUNTED PUMP

BULLETIN: EVD-GG75-475-C
 PAGE: 1
 EFFECTIVE: A. 25/08/2004

MODEL GG-75 with Lipseal and GG-475 with Mechanical Seal

Subject to change without notice
 F.O.B. Factory

Supersedes all previous parts lists



ITEM	DESCRIPTION	MATERIAL	PART NUMBER	QTY	PRICE
1	Key for Motor Shaft	Steel Keystock - 3/16" x 1-3/8"	2-460-047-375-00	1	
2	Snap Ring for Mechanical Seal Pump Only	Steel	2-555-024-375-00	1	
3	Mechanical Seal	Buna-N (Standard)	2-477-288-999-00	1	
		Viton (Optional)	2-477-289-999-00	1	
4	Lip Seal	Buna-N	2-283-023-378-00	2	
5	Casing	Iron	2-183-804-100-00	1	
6	Capscrew - Motor to Pump	Steel Grade 5 - 3/8" NC 1-1/4" Lg.	2-150-021-255-00	4	
7	Gasket for Relief Valve or Coverplate	Standard	2-316-003-806-30	1	
8	Internal Pressure Relief Valve	Iron - Pressure Range 30-75 PSI	3-795-200-000-03	1	
		Iron - Pressure Range 76-125 PSI	3-795-200-000-04	1	
		Iron - Pressure Range 126-200 PSI	3-795-200-000-08	1	
9	Capscrew - RV or Coverplate to Pump	Steel Grade 5 Hex Socket Head 5/16" x 3/4"	2-153-036-255-00	4	
10	Pipe Plug	Steel 1/8"	2-542-001-376-00	2	
11	Suckback Screw	Steel Grade 5 - #10-32 x 1/4" - For Lip Seal Pump	2-153-046-255-00	1	
		Steel Grade 5 - #10-32 x 1/4" - For Mechanical Seal Pump	2-153-046-255-00	2	
12	Rotor	Iron - For 56C Motor	2-565-204-100-24	1	
		Iron - For 143TC, 145TC, 182TC, or 184TC Motor	2-565-205-100-24	1	
13	Idler and Bushing Assembly	Iron / Bearing Bronze	3-417-202-40M-42	1	
		Iron / Carbon Graphite	3-417-200-40L-42	1	
14	Idler Bushing	Bearing Bronze	2-091-009-454-02	1	
		Carbon Graphite	2-091-004-880-02	1	
15	Head Gasket (Set)	Standard	3-310-003-999-00	1	
16	Idler Pin, Plain	Hardened Steel	2-431-001-291-00	1	
17	Head (Plain) and Plain Idler Pin Assembly	Iron / Hardened Steel	3-365-201-088-00	1	
18	Capscrew - Head to Pump	Steel Grade 5 - 1/4" NF 3/4 Lg	2-150-009-255-00	6	
	Cover Plate (Not Shown)	Iron	2-294-202-100-00	1	