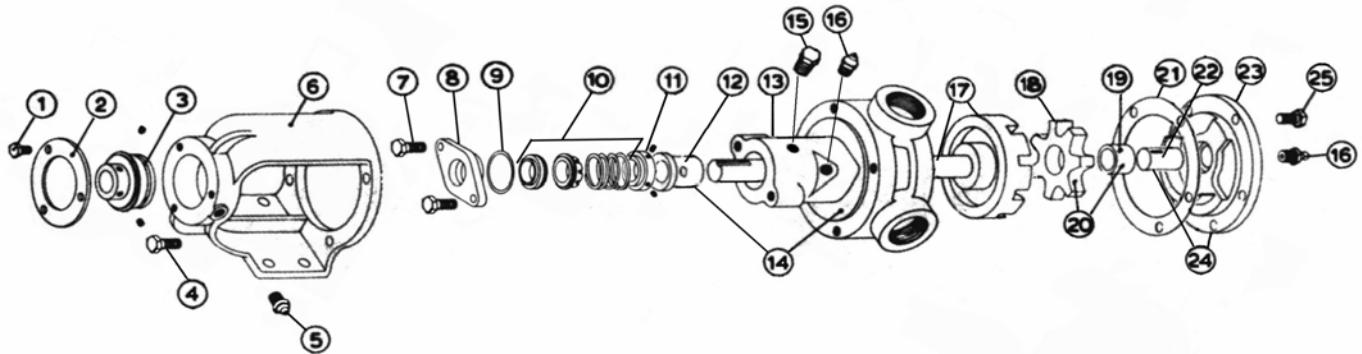


MODEL HX4-115SD with Mechanical Seal

Subject to change without notice
 F.O.B. Factory

Supercedes all previous parts lists



ITEM	DESCRIPTION	MATERIAL	PART NUMBER	QTY	PRICE
1	Bearing Retainer Bolts	1/4-28X5/8 Hex Cap Screw GR5	355-00-006-670	4	
2	Bearing Retainer	Alluminum	145-02-050-010	1	
3	Ball Bearing	Steel	150-00-125-605	1	
4	Bracket Bolt	5/16-18X3/4 Hex Cap Screw GR5	355-00-035-670	4	
5	Grease Fitting	1/8 NPT Straight Grease Fitting	325-00-025-605	1	
6	Bracket	Iron	165-02-005-310	1	
7	Seal Seat Retainer Fasteners	5/16-18X3/4 Hex Cap Screw GR5	355-00-035-670	2	
		5/16" Lockwasher	355-00-529-660	2	
8	Seal Seat Retainer	Iron	470-02-070-310	1	
		Iron - Teflon Seal Only	470-02-082-310	1	
9	Seal Seat Retainer Oring	Buna - #031	360-00-500-120	1	
10	Mechanical Seal Ass'y	3/4 XP901P901/X/VP90-1P901 T8 Viton	335-00-100-142	1	
11	Driving Ring	Steel	330-00-050-620	1	
		1/4-20X1/4 Cup Point SS Screw	355-00-271-660	1	
12	Casing Bushing	Bronze	175-02-075-050	1	
		Carbon	2-095-011-880-00	1	
13	Casing	Iron	190-02-310-310	1	
14	Casing and Bushing Ass'y	Iron / Bronze	Consult Factory	1	
		Iron / Carbon	Consult Factory	1	
15	Pipe Plug	1/8 NPT Hex Head Plug	390-00-050-605	1	
16	Grease Fitting	1/4-28 Straight Grease Fitting	325-00-075-605	2	
17	Rotor and Shaft Ass'y	Ductalloy / Steel	455-03-290-139	1	
18	Idler	Iron	2-418-400-352-40	1	
19	Idler Bushing	Tungsten	2-095-024-765-02	1	
20	Idler and Bushing ass'y	Iron / Tungsten	285-03-120-357	1	
21	Head Gasket	Standard	245-00-046-240	2	
22	Idler Pin	Tungsten	2-433-012-765-00	1	
23	Head	Iron - Plain	2-370-400-100-00	1	
		Iron - Relief Valve	265-02-130-310	1	
24	Head and Idler Pin Ass'y	Plain Head - CI/Tung - Solid	270-03-110-357	1	
		Relief Valve Head - CI/Tung - Solid	270-03-135-357	1	
		5/16-18X3/4 Hex Cap Screw GR5	355-00-035-670	5	
*	1-500 Series Bushing (NOT SHOWN)	Bronze Casing Sleeve	175-12-050-110	1	
*	Grease Fitting (NOT SHOWN)	1/8" 15-25 PSI Grease Rel Fitting	325-00-125-605	1	
*	Male Connector (NOT SHOWN)	1/8NPTX1/4 Tube Male Connector	385-00-080-030	2	
*	Tubing (NOT SHOWN)	1/4 Steel Tubing	385-00-150-605	12 in.	
*	Lip Seals (NOT SHOWN)	H,HX4 115SD Lip Seals CR7410	195-00-075-120	1	