

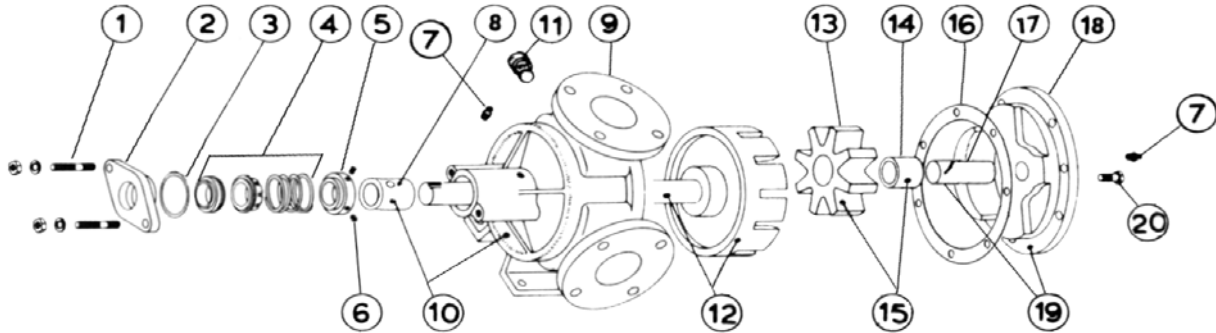
VICAN GENERAL PURPOSE UNMOUNTED PUMP

BULLETIN: EVD-K32S-C
 PAGE: 1
 EFFECTIVE: A.11/04

MODEL K-32 with Mechanical Seal

Subject to change without notice
 F.O.B. Windsor, Ontario

Supersedes all previous parts lists



ITEM	DESCRIPTION	MATERIAL	PART NUMBER	QTY	PRICE
1	Seal Seat Retainer Fasteners	3/8-16x1 1/4 Hex Cap Screw Grade 5	355-00-068-670	2	
		3/8 Lockwasher	355-00-532-660	2	
2	Seal Seat Retainer	Steel	470-02-472-310	1	
3	Seal Seat Retainer O-ring	#229 Buna	360-00-560-120	1	
4	Mechanical Seal Ass'y	Buna / Carbon vs Ni-Resist / Sstl - BF871	335-00-195-045	1	
		Buna / Carbon vs Ceramic / SS - BF1C1	335-00-150-040	1	
		Viton / Carbon vs Ni-Resist / Sstl - XP871	335-00-150-055	1	
		Viton / Carbon vs Ceramic / SS - XP1C1	335-00-150-050	1	
5	Driving Ring	Steel	330-00-100-620	1	
6	Set Screws	1/4-20x1/4 Cup Point Socket Set Screw	355-00-271-660	2	
7	Grease Fitting	Steel	325-00-025-605	2	
8	Casing Bushing	Bronze	175-02-130-050	1	
		Carbon	175-02-130-140	1	
9	Casing	Iron	190-02-405-310	1	
10	Casing and Bushing Ass'y	Iron / Bronze		1	
		Iron / Carbon		1	
11	Pipe Plug	1/4-18 Hex Head	390-00-125-605	1	
12	Rotor and Shaft Ass'y	Iron / Steel	455-03-410-349	1	
		Ductalloy / Steel	455-03-410-139	1	
13	Idler	Iron	280-02-200-310	1	
14	Idler Bushing	Bronze	2-108-007-454-04	1	
		Carbon	2-108-014-880-04	1	
15	Idler and Bushing ass'y	Iron / Bronze	285-03-200-330	1	
		Iron / Carbon	285-03-200-332	1	
16	Head Gasket	Standard	245-00-050-240	3	
17	Idler Pin	Steel - Greasable	295-00-110-690	1	
		Steel Non-greasable	295-00-130-690	1	
18	Head	Iron - Plain	265-02-260-310	1	
		Iron - Relief Valve	265-02-270-310	1	
19	Head and Idler Pin Ass'y	Iron - Plain / Steel - Greasable	270-03-260-350	1	
		Iron - Relief Valve / Steel - Greasable	270-03-270-350	1	
		Iron - Plain / Steel - Non-greasable	270-03-265-350	1	
		Iron - Relief Valve / Steel - Non-greasable	270-03-275-350	1	
20	Head Bolts	Plain	7/16-14x7/8 Hex Cap Screw Grade 5	6	
		Relief Valve	7/16-14x1 Hex Cap Screw Grade 5	4	
			7/16-14x7/8 Socket Head Cap Screw	2	